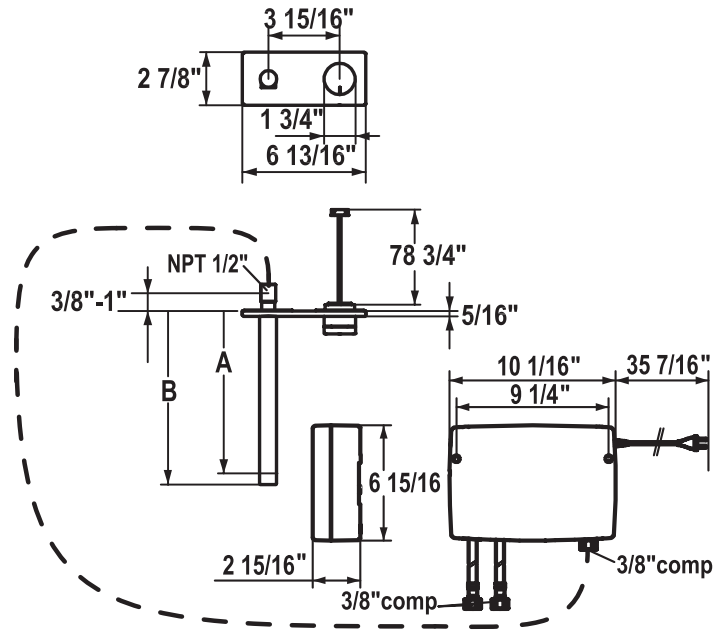


KWC ONO Touch Light PRO



KWC-No.	Finish
11.654.004.000	chrome
8 7/8" spout length	
11.654.003.000	chrome
6 7/8" spout length	
39.004.500.931	rough valve

Bath

Wall Mount Lavatory Faucet with LED-Technology

Electronic controlled

- touch light PRO technology

Touch'n'flow 1-2-3

- touch'n'flow 1: cold water, flow rate can be individually adjusted and saved
- touch'n'flow 2: warm water, flow rate can be individually adjusted and saved
- touch'n'flow 3: hot water, flow rate can be individually adjusted and saved

3 preset temperatures and flow rates

Microprocessor-control

- cleaning program
- adjustable temperature limit
- hot water disinfection (5 minutes) can be adjusted
- restore back to factory settings
- built in safety controls, water automatically turns off after 10 minutes

Fixed spout

- Caché® hidden aerator

Touch light PRO control unit, maintenance-free

Up-to-date microprocessor and drive technology

Tried-and-tested valve technology

Includes installation materials

Designed for wired connection to 1 operating unit (standard),

wireless connection to 1 operating unit (optional)

Connecting thread 1/2" FPT

Flexible connection hoses 3/8" compression

Includes:

- plug power supply 100-240 V / operating voltage 15 V / cable length 35 7/16"
- control unit and wired operating unit / cable length 78 3/4"
- trim kit

Sold separately:

- unit for concealed installation 39.004.500.931

To be ordered separately (optional or if necessary):

- extension set 1500 mm Z.536.352, comprising: stainless steel hose 1500 mm, 3/8" x 3/8", double nipple, sealing material

KWC ONO touch light PRO wireless operating unit Z.536.638.000

For comprehensive information on planning, installation and operation contact your KWC dealer.

Flow rate max 1.2 gpm (60 psi)